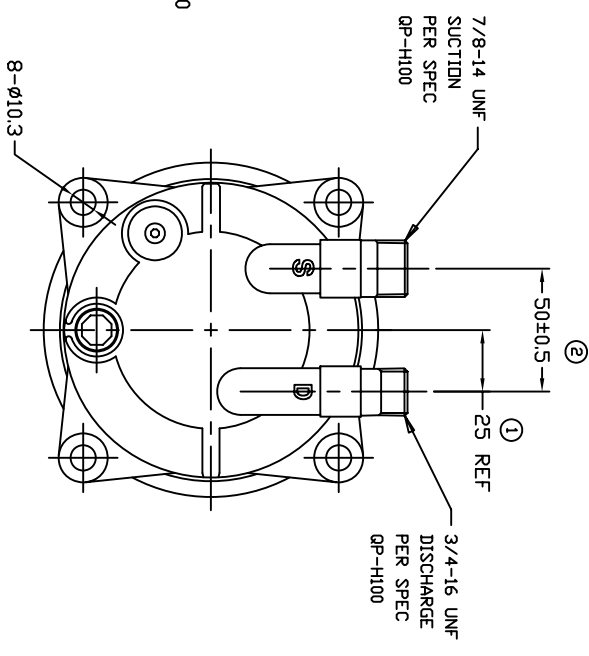
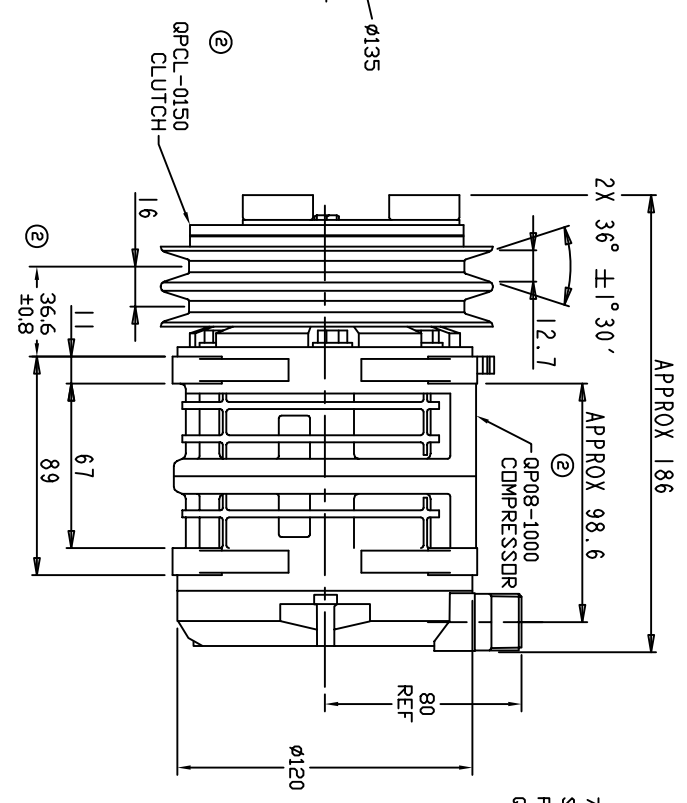
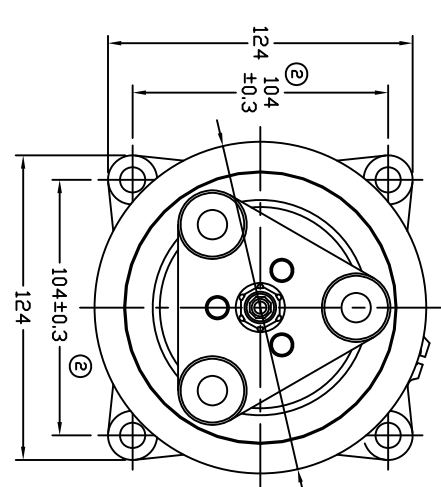


REVISIONS			DATE	APPROVED
CHANGE ORDER	LTR	DESCRIPTION		
009024	1	VERTICAL FITTINGS @ 25 WERE 14" VV	05/19/09	
009035	2	ADDED TOLERANCES & PART NDS	09/09/09	



CLUTCH SPECIFICATIONS:

- VOLTAGE..... 24 VDC
- BELT..... A2
- STATIC TORQUE..... 35 Nm (3.5 Kgfm)
- INITIAL AFTER BURNISHING..... 49 Nm (5 Kgfm)
- MAX POWER CONSUMPTION..... 45W @ 25°C
- ROTATION DIRECTION..... CW OR CCW
- WEIGHT..... 2.25 Kg

COMPRESSOR SPECIFICATIONS:

- MODEL..... QP08HD
- NUMBER OF CYLINDERS..... 6
- BORE X STROKE..... 36 X 13.4 mm
- DISPLACEMENT..... 82.0 cm³/REV
- SPEED RANGE..... 700 - 6000 RPM
- ROTATION DIRECTION..... CW OR CCW
- REFRIGERANT..... R-134a
- LUBRICANT..... PAG 46 150+20cm³
- WEIGHT..... 4.1 Kg

UNLESS OTHERWISE SPECIFIED DIMENSIONS ARE IN MM PER INTERPRET DIM AND TOL PER ASME Y14.5M - 1994



CAD GENERATED DRAWING, DO NOT MANUALLY UPDATE

TITLE
COMPRESSOR ASSEMBLY

THIRD ANGLE PROJECTION	DRAWN	DATE
	ELB	03/18/09
	CHECKED	
	APPROVED	
	ENG APPVL	

SIZE A
CODE IDENT NO DWG NO QP08-1135
SCALE: NONE SHEET 1 OF 1