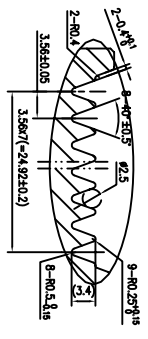
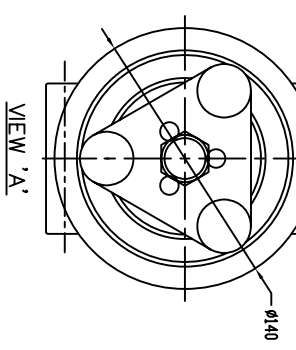
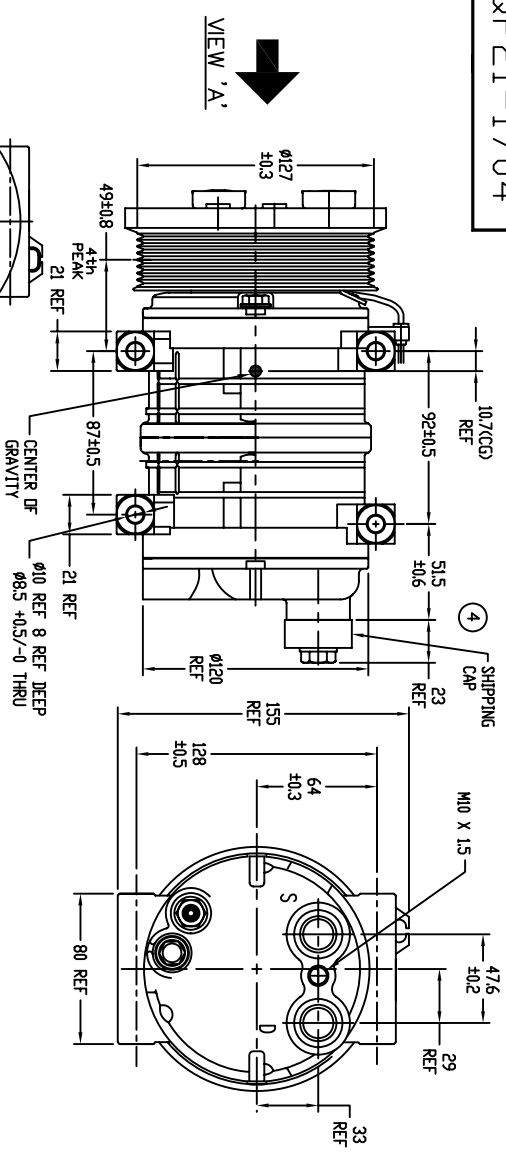
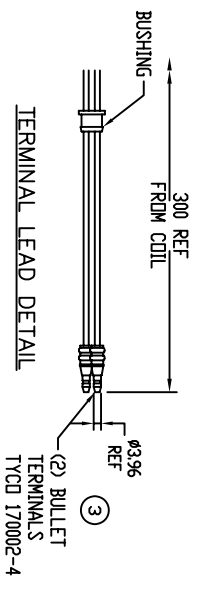


QP21-1704



**CLUTCH SPECIFICATIONS**

- 1) VOLTAGE.....24 VDC
- 2) BELT.....PVB
- 3) STATIC TORQUE.....40 Nm
- INITIAL.....59 Nm
- AFTER BURNISHING.....59 Nm
- 4) MAX POWER CONSUMPTION.....45W @ 25°C
- 5) WEIGHT.....31 Kg



**COMPRESSOR SPECIFICATIONS**

- 1) MODEL.....QP21
- 2) NUMBER OF CYLINDERS.....10
- 3) BORE x STROKE.....Ø32 x 26.7
- 4) DISPLACEMENT.....214.7 cm3
- 5) SPEED RANGE.....700-6000 RPM
- 6) ROTATION DIRECTION.....CW or CCW
- 7) REFRIGERANT.....R-134a
- 8) LUBRICANT.....PAG 46 180cc
- 9) WEIGHT.....51 Kg

**REVISIONS**

CHG	ED#	DESCRIPTION	DATE	BY	CK
A	CR	REVISED	07/24/07	GLB	
B	ENG	REVISED	09/19/07		
C	ENG	ADDED TOLERANCES, REV WIRE	12/19/07		
1	008023	ADDED: '46' to PAG (NOTE 8)	08/12/08		
2	009029	ADDED CLUTCH SPECS & WATTS	08/12/08		
3	009033	ADDED 170002-4 Ø3.96	09/24/09		
4	ENG	ADDED SHIPPING CAP	10/02/09	GLB	

**NOTICE**

QUE PRODUCTS, LLC CLAIMS PROPRIETARY RIGHTS IN THE MATERIAL DISCLOSED HEREIN. THIS DRAWING IS ISSUED FOR ENGINEERING INFORMATION ONLY. IT MAY NOT BE REPRODUCED, NOR MAY THE INFORMATION HEREON BE USED FOR MFG. PURPOSES WITHOUT WRITTEN PERMISSION FROM QUE PRODUCTS, LLC

**UNLESS OTHERWISE SPECIFIED:**

X.XX=± - X.XXX=± - <=± -  
 DRAFT = - PER SIDE WALL = - RADI = -  
 DIMENSION LIMITS TO BE HELD AFTER PLATING OR  
 CONVERSION COATING  
 DIMENSIONS PER ANSI Y14.5  
 SURFACE FINISH PER ANSI Y14.36

CUSTOMER NAME PART NO - REV



**ALL CHANGES TO BE MADE ON CAD SYSTEM**

DRAWN	DATE	EWB-ECR	CHECKED	DATE
GLB	05/02/2007			

TITLE  
 H-PAD 24V PVB GRV 127mm

FILE SIZE  
 EXPERIMENTAL DWG NO  
 RELEASED DWG NO  
 QP21-1704

SCALE: / = 1.00 DO NOT SCALE DRAWING SHEET 1 OF 1