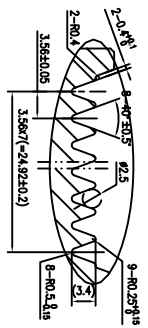
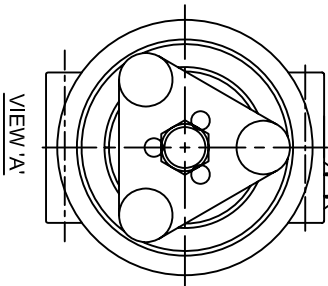
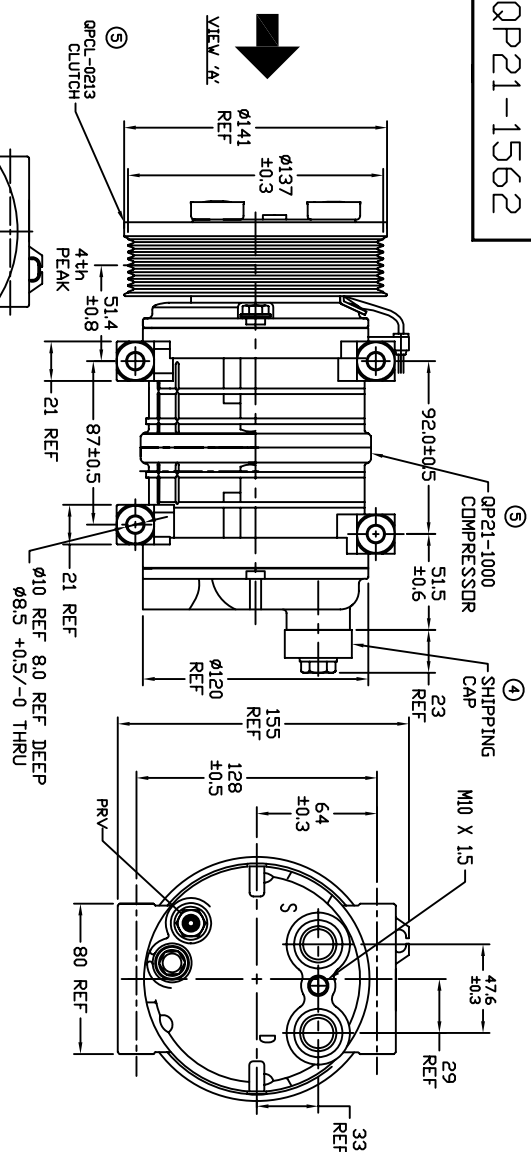
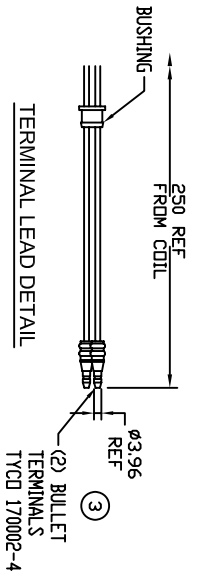


QP21-1562



CLUTCH SPECIFICATIONS

- 1) VOLTAGE.....12 VDC
- 2) BELT.....PV8
- 3) STATIC TORQUE
- INITIAL.....40 Nm
- AFTER BURNISHING.....59 Nm
- 4) MAX POWER CONSUMPTION.....45W @ 25°C
- 5) WEIGHT.....31 Kg



COMPRESSOR SPECIFICATIONS

- 1) MODEL.....QP21
- 2) NUMBER OF CYLINDERS.....10
- 3) BORE x STROKE.....Ø32 x 26.7
- 4) DISPLACEMENT.....214.7 cm³
- 5) SPEED RANGE.....700-6000 RPM
- 6) ROTATION DIRECTION.....CW or CCW
- 7) REFERIGERANT.....R-134a
- 8) LUBRICANT.....PAG 46 180 +20c
- 9) WEIGHT.....5.1 Kg

REVISIONS

CHG	ED#	DESCRIPTION	DATE	BY	CK
2A	009029	REDRAWN, NO CHANGE	07/06/09	GLB	
2B	009029	59Nm WAS 69Nm	07/06/09		
3	009033	170002-4 (3.96) WAS 60793-1 (4.57)	09/24/09		
4	ENG	ADDED SHIPPING CAP	10/02/09		
5	ENG	ADDED PART NO'S	11/17/09	GLB	

NOTICE

QUE PRODUCTS, LLC CLAIMS PROPRIETARY RIGHTS IN THE MATERIAL DISCLOSED HEREIN. THIS DRAWING IS ISSUED FOR ENGINEERING INFORMATION ONLY. IT MAY NOT BE REPRODUCED, NOR MAY THE INFORMATION HEREON BE USED FOR MFG. PURPOSES WITHOUT WRITTEN PERMISSION FROM QUE PRODUCTS, LLC

UNLESS OTHERWISE SPECIFIED:

X.XX=± - X.XXX=± - <=± -
 DRAFT = - PER SIDE WALL = - RADIUS = -
 DIMENSION LIMITS TO BE HELD AFTER PLAYING OR
 CONVERSION COATING
 DIMENSIONS PER ANSI Y14.5
 SURFACE FINISH PER ANSI Y14.36
 CUSTOMER NAME PART NO - REV



ALL CHANGES TO BE MADE ON CAD SYSTEM

DRAWN	DATE	CHKD	DATE
GLB	05/08/2007	EWR-ECR	

TITLE
 H-PAD PV8 137mm 12V

FILE SIZE
 EXPERIMENTAL DWG NO
 RELEASED DWG NO
 QP21-1562