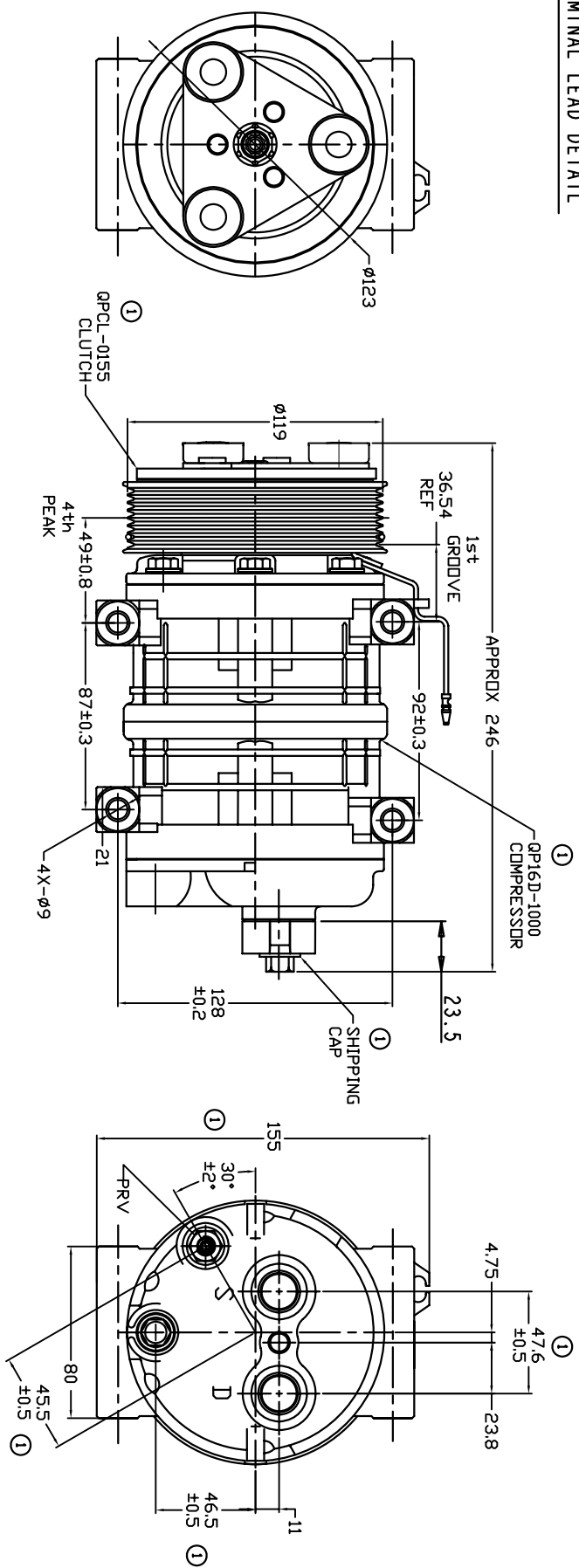
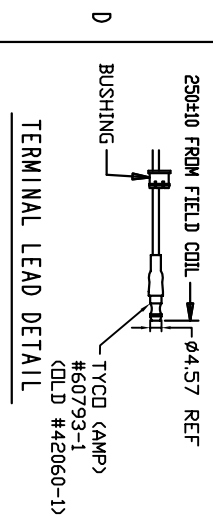


| REVISIONS    |     |                             |          |          |
|--------------|-----|-----------------------------|----------|----------|
| CHANGE ORDER | LTR | DESCRIPTION                 | DATE     | APPROVED |
| 009035       | 1   | ADDED TOLERANCES & PART NDS | 11/04/09 |          |



**CLUTCH SPECIFICATIONS:**

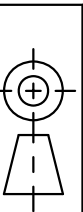
- VOLTAGE..... 12 VDC
- BELT..... PV8
- STATIC TORQUE..... 35 Nm (3.5 kgfm)
- INITIAL AFTER BURNISHING..... 49 Nm (5 kgfm)
- MAX POWER CONSUMPTION..... 45W @ 25°C
- ROTATION DIRECTION..... CW OR CCW
- WEIGHT..... 2.25 Kg

**COMPRESSOR SPECIFICATIONS:**

- MODEL..... QP16HD
- NUMBER OF CYLINDERS..... 6
- BORE X STROKE..... 36 X 26.7 mm
- DISPLACEMENT..... 162.9 cm<sup>3</sup>/REV
- SPEED RANGE..... 700 - 6000 RPM
- ROTATION DIRECTION..... CW
- REFRIGERANT..... R-134a
- LUBRICANT..... PAG 46 180+20cm<sup>3</sup>
- WEIGHT..... 4.7 Kg

UNLESS OTHERWISE SPECIFIED  
 DIMENSIONS ARE IN MM. PER  
 INTERPRET DIM AND TOL. PER  
 ASME Y14.5M - 1994

THIRD ANGLE PROJECTION



| CAD GENERATED DRAWING;<br>DO NOT MANUALLY UPDATE | DATE     |
|--|----------|
| GLB  | 04/28/09 |

CHECKED  
 APPROVED

FINISH  
 ENG APPVL



TITLE  
 COMPRESSOR ASSEMBLY

QP16HD H-PAD  
 PV8 119mm 12V 3-EYE

SCALE NONE  
 SHEET 1 OF 1