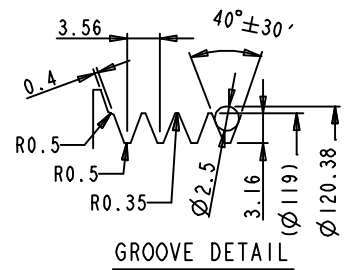
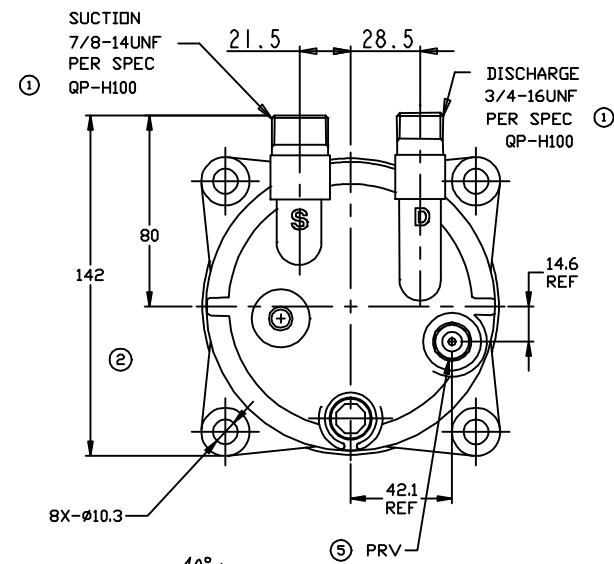
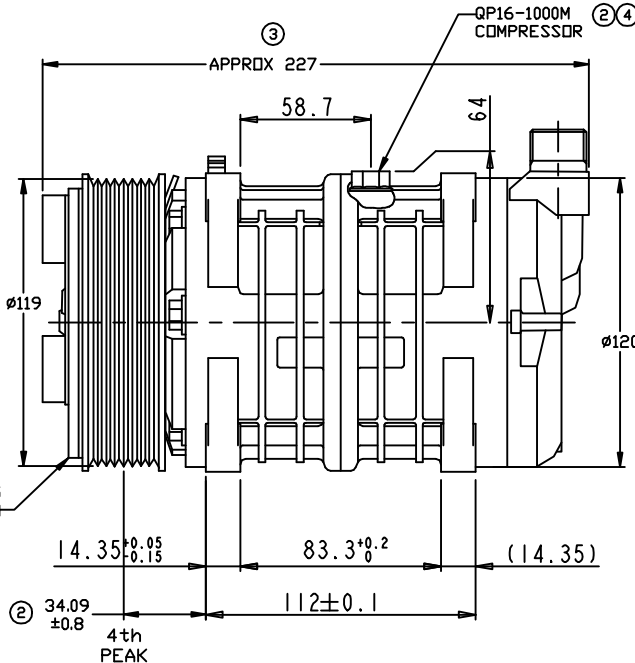
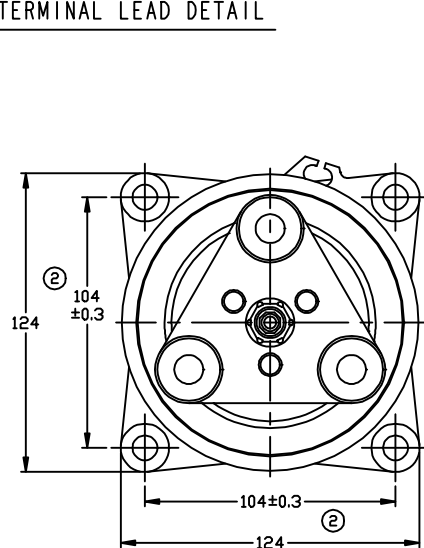


TERMINAL LEAD DETAIL

REVISIONS				
CHANGE ORDER	LTR	DESCRIPTION	DATE	APPROVED
Q08023	1	PAG 46 was PAG 100, ADDED QP-H100 SPEC	08/26/08	
Q09035	2	ADDED TOLERANCES & PART NO'S	10/14/09	
ENG	3	227 WAS 261 (ICE TYPD)	06/04/10	
ENG	4	QP16-1000M WAS QP16-1115	10/28/10	
Q11002	5	RELOCATED PRV	03/17/11	



GROOVE DETAIL

- CLUTCH SPECIFICATIONS:**
- VOLTAGE.....12 VDC
 - BELT.....PVB
 - STATIC TORQUE
INITIAL.....35 Nm (3.5 Kgfm)
AFTER BURNISHING.....49 Nm (5 Kgfm)
 - MAX POWER CONSUMPTION.....45W @ 25°C
 - ROTATION DIRECTION.....CW OR CCW
 - WEIGHT.....2.30 Kg
- COMPRESSOR SPECIFICATIONS:**
- MODEL.....QP16HD
 - NUMBER OF CYLINDERS.....6
 - BORE X STROKE.....36 X 26.7 mm
 - DISPLACEMENT.....162.9 cm³/REV
 - SPEED RANGE.....700 - 6000 RPM
 - ROTATION DIRECTION.....CW OR CCW
 - REFRIGERANT.....R-134a
 - LUBRICANT.....PAG 46 180+20cm3
 - WEIGHT.....4.7 Kg

UNLESS OTHERWISE SPECIFIED DIMENSIONS ARE IN MM. INTERPRET DIM AND TOL PER ASME Y14.5M - 1994	CAD GENERATED DRAWING. DO NOT MANUALLY UPDATE		 DECATUR, ILLINOIS	
	THIRD ANGLE PROJECTION	DRAWN: GLB DATE: 11/08/07		
	CHECKED	SIZE: A CODE IDENT NO: QP16-1196 DWG NO: QP16-1196 REV: 5	COMPRESSOR ASSEMBLY QP16HD MONOLITHIC PV8 119mm 12V 3-EYE	
	APPROVED			SCALE: NONE
FINISH	ENG APPVL			