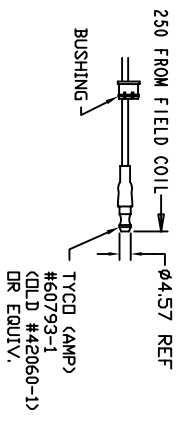
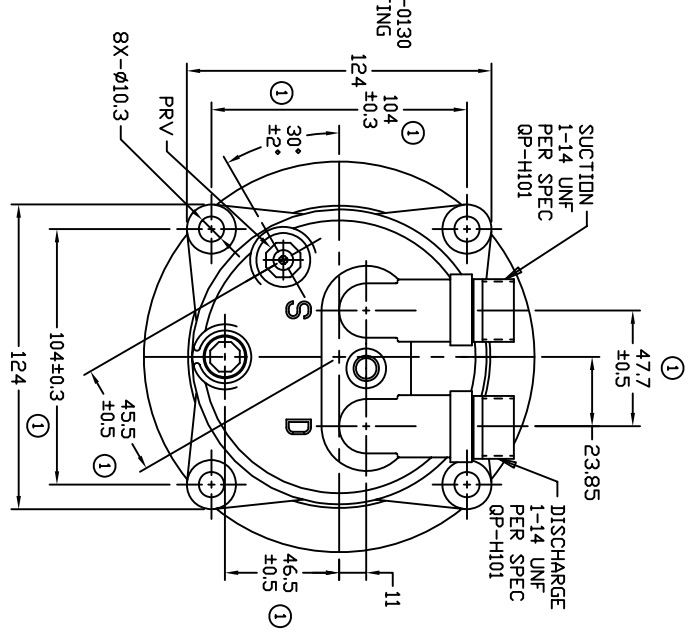
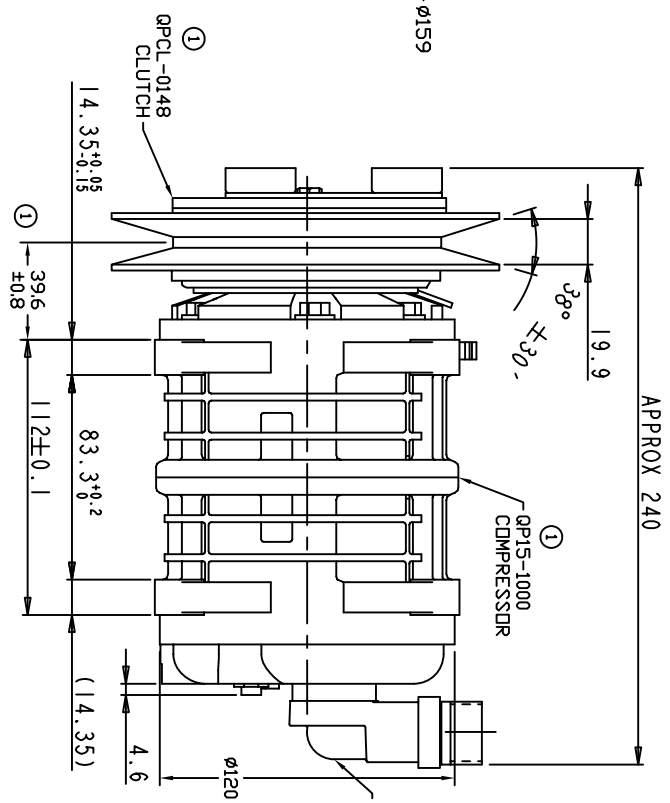
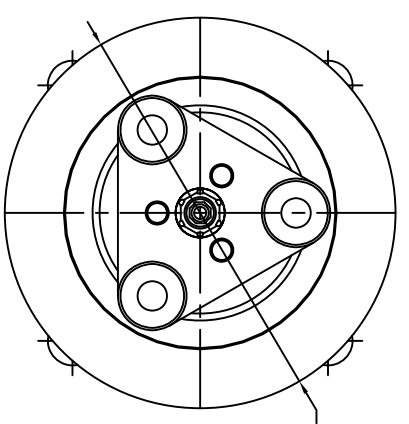


REVISIONS		DATE	APPROVED
CHANGE ORDER	LTR	DESCRIPTION	
009035	1	ADDED TOLERANCES & PART NDS	10/28/09



TERMINAL LEAD DETAIL



- CLUTCH SPECIFICATIONS:**
- VOLTAGE.....12 VDC
 - BELT.....A1 DR B1
 - STATIC TORQUE.....
 - INITIAL.....
 - AFTER BURNISHING.....35 Nm (3.5 Kgfm)
 - MAX POWER CONSUMPTION.....49 Nm (5 Kgfm)
 - ROTATION DIRECTION.....45W Ø 25°C
 - WEIGHT.....CW OR CCW
 -2.85 Kg

- COMPRESSOR SPECIFICATIONS:**
- MODEL.....QP15HD
 - NUMBER OF CYLINDERS.....6
 - BORE X STROKE.....36 X 24.0 mm
 - DISPLACEMENT.....146.7 cm³/REV
 - SPEED RANGE.....700 - 6000 RPM
 - ROTATION DIRECTION.....CW OR CCW
 - REFRIGERANT.....R-134a
 - LUBRICANT.....PAG 46 150+20 cm³
 - WEIGHT.....4.4 Kg

UNLESS OTHERWISE SPECIFIED
DIMENSIONS ARE IN MM. PER
INTERPRET DIM AND TOL. PER
ASME Y14.5M - 1994

CAD GENERATED DRAWING,
DO NOT MANUALLY UPDATE

THIRD ANGLE PROJECTION	CHECKED	DATE
	APPROVED	06/26/08

FINISH	ENG APPVL

DAVE PRODUCTS, LLC

TITLE
COMPRESSOR ASSEMBLY

QP15HD, VERTICAL FITTING
VARIABLE GROOVE 159mm 12V 3-EYE

SCALE NONE	SHEET 1 OF 1
SIZE A	REV 1