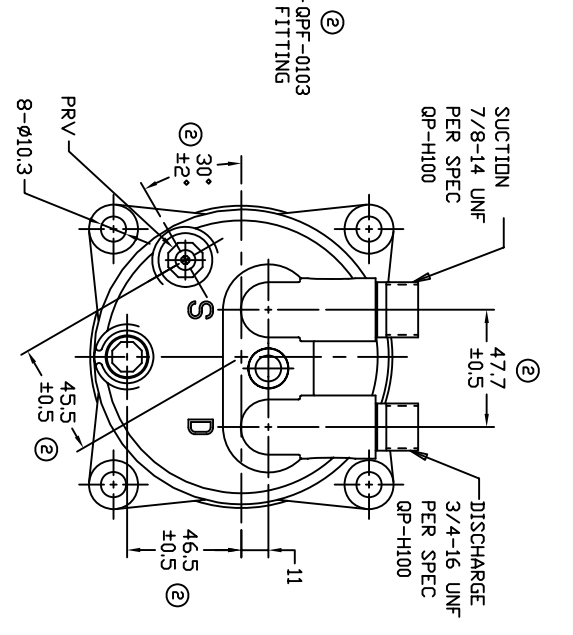
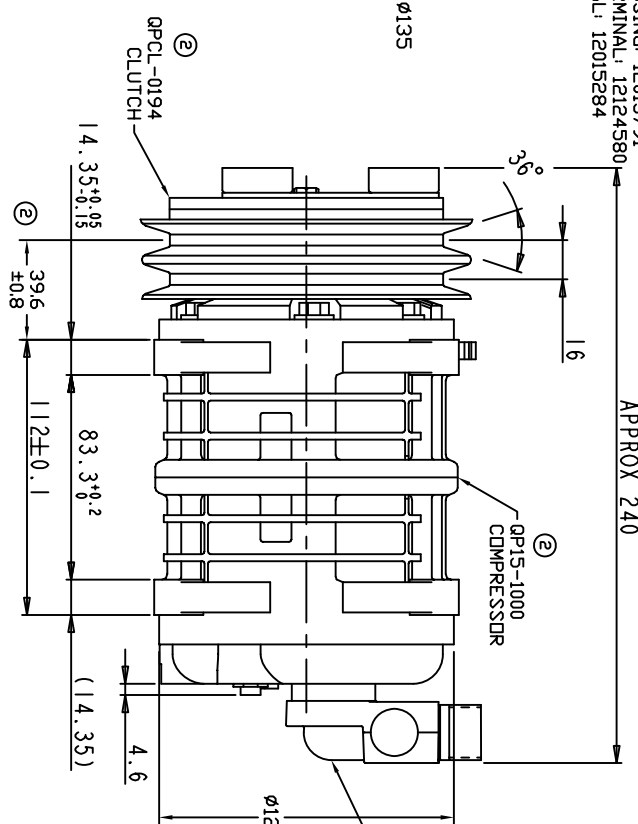
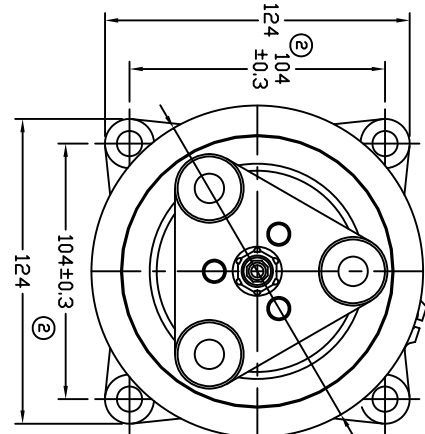
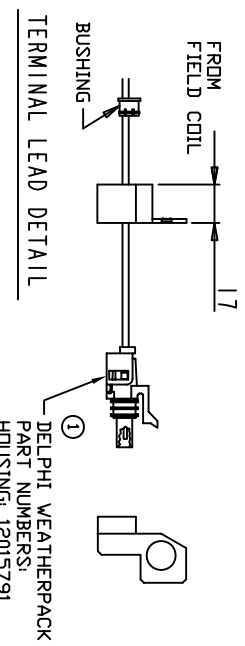


REVISIONS		DATE	APPROVED
1	ADDED TOLERANCES & PART NOS	10/27/09	
2	ADDED TOLERANCES & PART NOS	07/13/09	
1	DETAILED CONNECTOR		
LTR	DESCRIPTION		
009014	1		
009035	2		



CLUTCH SPECIFICATIONS:

- VOLTAGE..... 12 VDC
- BELT..... A2
- STATIC TORQUE
INITIAL..... 35 Nm (3.5 Kgfm)
AFTER BURNISHING..... 49 Nm (5 Kgfm)
- MAX POWER CONSUMPTION..... 45W @ 25°C
- ROTATION DIRECTION..... CW OR CCW
- WEIGHT..... 2.25 Kg

COMPRESSOR SPECIFICATIONS:

- MODEL..... QP-15HD
- NUMBER OF CYLINDERS..... 6
- BORE X STROKE..... 36 X 24.0 mm
- DISPLACEMENT..... 146.7 cm³/REV
- SPEED RANGE..... 700 - 6000 RPM
- ROTATION DIRECTION..... CW OR CCW
- REFRIGERANT..... R-134g
- LUBRICANT..... PAG 46 150+20cm³
- WEIGHT..... 4.4 Kg

UNLESS OTHERWISE SPECIFIED DIMENSIONS ARE IN MM PER ASME Y14.5M - 1994

THIRD ANGLE PROJECTION	CAD GENERATED DRAWING, DO NOT MANUALLY UPDATE	DATE
	GLB	11/08/07
FINISH	CHECKED	
	APPROVED	
	ENG APPVL	

DOVE PRODUCTS, LLC

TITLE: COMPRESSOR ASSEMBLY
QP15HD, VERTICAL FITTING
A2 135mm 12V 3-EYE

SCALE: NONE

SHEET 1 OF 1