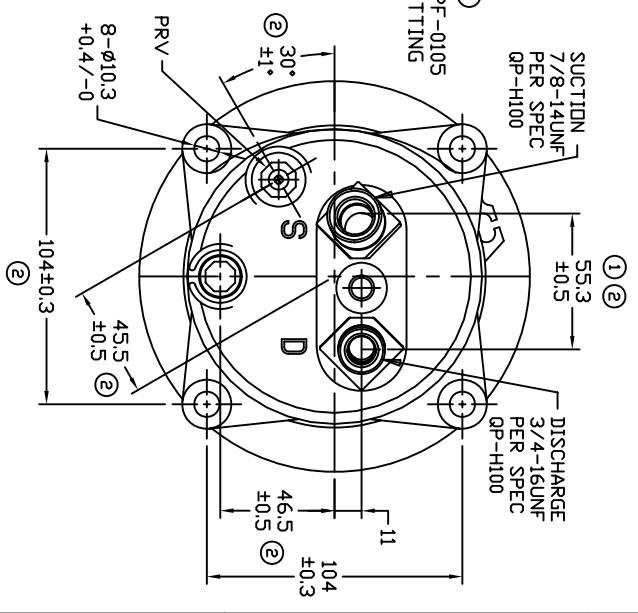
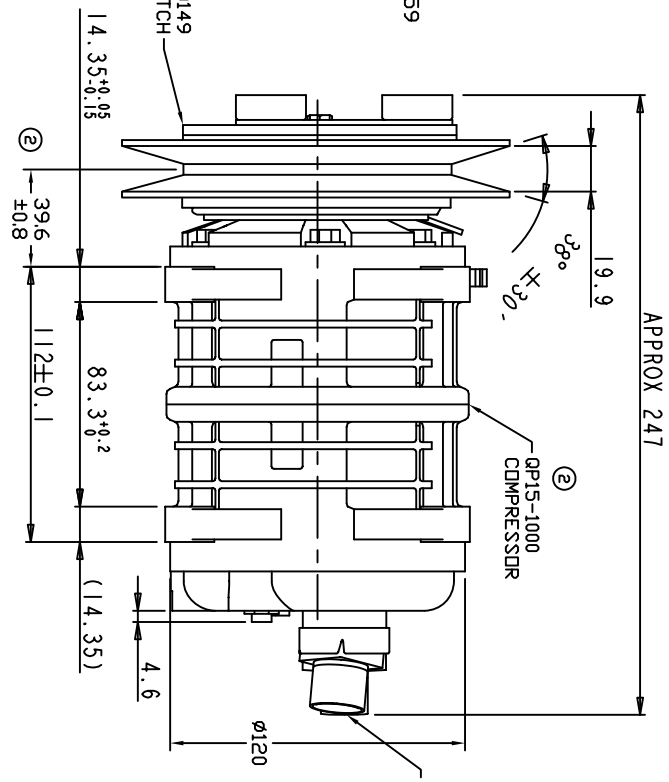
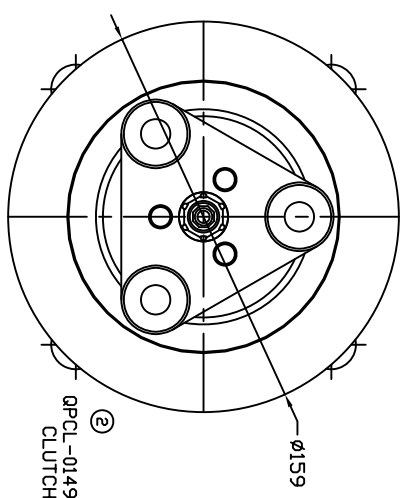


TERMINAL LEAD DETAIL

REVISIONS				
CHANGE ORDER	LTR	DESCRIPTION	DATE	APPROVED
009032	1	SS3 WAS 58, ADDED #QP-0105	07/22/09	
009035	2	ADDED TOLERANCES & PART NOS	10/26/09	



CLUTCH SPECIFICATIONS:

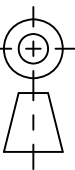
- VOLTAGE..... 24 VDC
- BELT..... A1 DR B1
- STATIC TORQUE..... 35 Nm (3.5 Kgfm)
- INITIAL AFTER BURNISHING..... 49 Nm (5 Kgfm)
- MAX POWER CONSUMPTION..... 45W @ 25°C
- ROTATION DIRECTION..... CW OR CCW
- WEIGHT..... 2.85 Kg

COMPRESSOR SPECIFICATIONS:

- MODEL..... QP-15HD
- NUMBER OF CYLINDERS..... 6
- BORE X STROKE..... 36 X 24.0 mm
- DISPLACEMENT..... 146.7 cm<sup>3</sup>/REV
- SPEED RANGE..... 700 - 6000 RPM
- ROTATION DIRECTION..... CW OR CCW
- REFRIGERANT..... R-134a
- LUBRICANT..... PAG 46 150+20 cm<sup>3</sup>
- WEIGHT..... 4.4 Kg

UNLESS OTHERWISE SPECIFIED  
 DIMENSIONS ARE IN MM. PER  
 INTERPRET DIM AND TOL. PER  
 ASME Y14.5M - 1994

THIRD ANGLE PROJECTION



CAD GENERATED DRAWING; DO NOT MANUALLY UPDATE	DATE
GLB	06/27/08

CHECKED

APPROVED

FINISH



TITLE  
 COMPRESSOR ASSEMBLY

QP-15HD, HORIZONTAL FITTING  
 VARIABLE GROOVE 159MM 3-EYE 24V

SIZE CODE IDENT NO DWG NO QP15-1279

SCALE NONE SHEET 1 OF 1