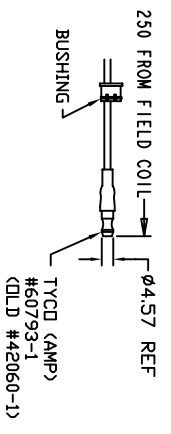
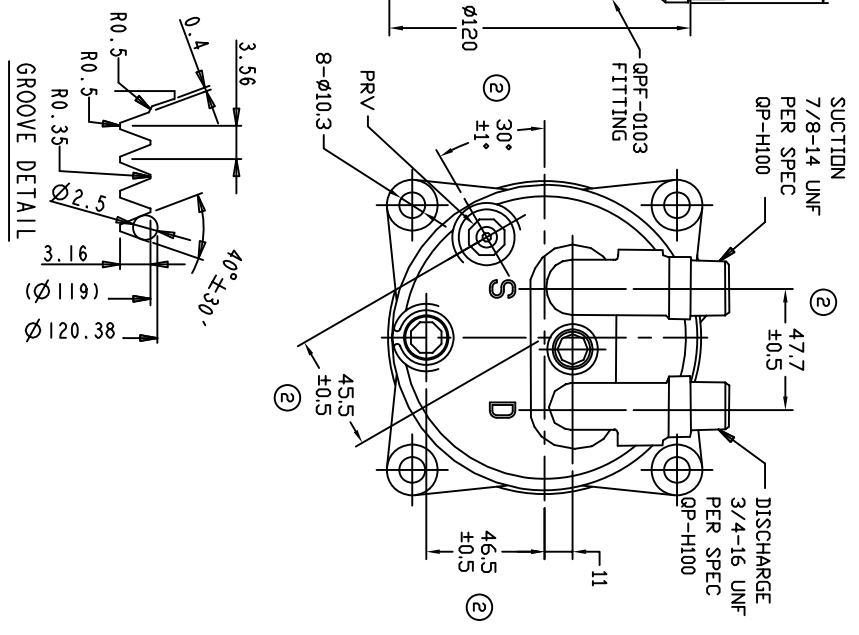
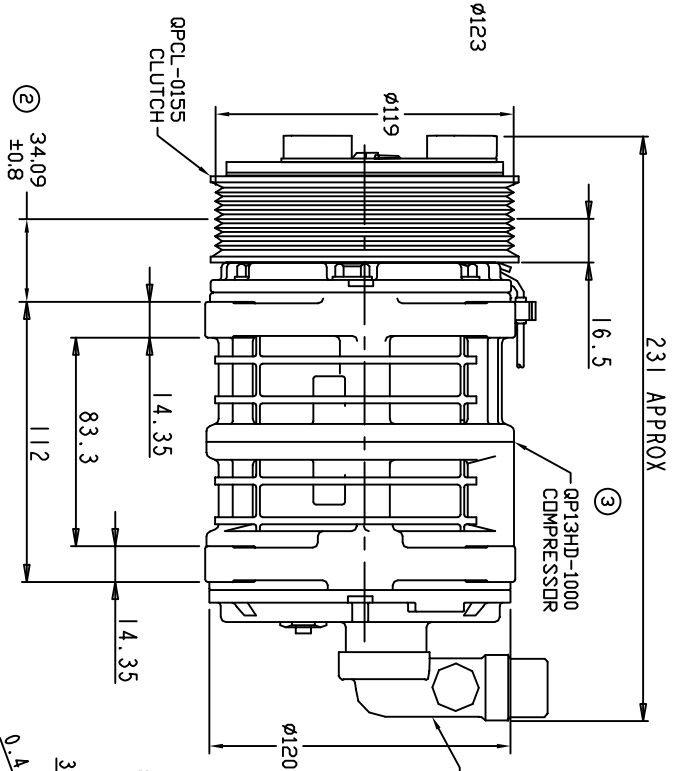
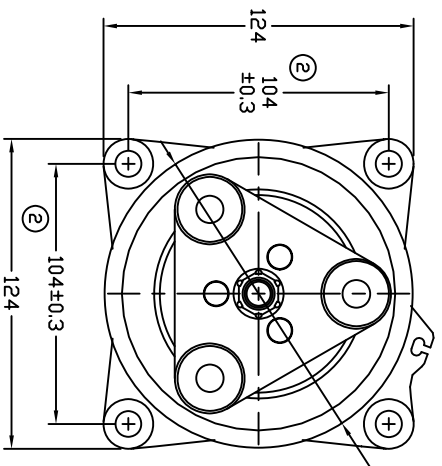


REVISIONS			DATE	APPROVED
CHANGE ORDER	LTR	DESCRIPTION		
008023	1	PAG 46 was PAG 100	09/30/08	
009035	2	ADDED TOLERANCES	08/21/09	
ENG	3	ADDED COMPRESSOR PART NO	09/14/09	



TERMINAL LEAD DETAIL



CLUTCH SPECIFICATIONS:

- VOLTAGE.....12 VDC
- BELT.....PV8
- STATIC TORQUE.....
- INITIAL AFTER BURNISHING.....35 Nm (3.5 Kgfm)
- MAX POWER CONSUMPTION.....49 Nm (5 Kgfm)
- ROTATION DIRECTION.....CW OR CCW
- WEIGHT.....2.3 Kg

COMPRESSOR SPECIFICATIONS:

- MODEL.....QP-13 HD
- NUMBER OF CYLINDERS.....6
- BORE X STROKE.....36 X 21.4 mm
- DISPLACEMENT.....131 cm³/REV
- SPEED RANGE.....700 - 6000 RPM
- ROTATION DIRECTION.....CW OR CCW
- REFRIGERANT.....R-134a
- LUBRICANT.....
- WEIGHT.....4.5 Kg

UNLESS OTHERWISE SPECIFIED DIMENSIONS ARE IN MM PER INTERPRET DIM AND TOL PER ASME Y14.5M - 1994

ROQUE PRODUCTS, LLC

TITLE
 COMPRESSOR ASSEMBLY
 QP-13 HD, V-MANIFOLD
 PV8 12V 119 3-EYE

THIRD ANGLE PROJECTION	FINISH	SCALE NONE	SHEET 1 OF 1
CHECKED	ENG APPVL		
APPROVED			
DATE 06/21/08			
CODE IDENT NO	DWG NO	REV	
	QP13-1302	3	