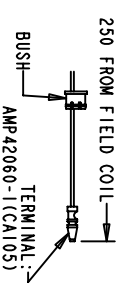
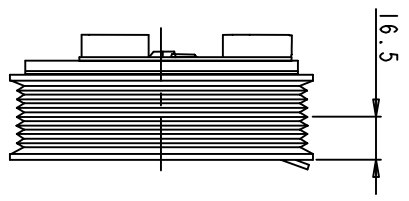
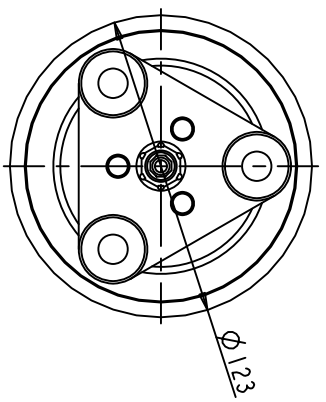
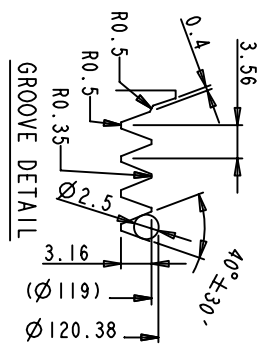


REVISIONS				
CHANGE ORDER	LTR	DESCRIPTION	DATE	APPROVED

- CLUTCH SPECIFICATIONS:
- VOLTAGE.....12 VDC
 - BELT.....POLY "V" 8K TYPE
 - STATIC TORQUE
INITIAL.....35 Nm (3.5 Kgfm)
AFTER BURNISHING.....49 Nm (5 Kgfm)
 - MAX POWER CONSUMPTION.....45W @ 25°C
 - ROTATION DIRECTION.....CW OR CCW
 - WEIGHT.....2.3 Kg



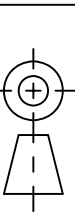
TERMINAL LEAD DETAIL



GROOVE DETAIL

UNLESS OTHERWISE SPECIFIED
DIMENSIONS ARE IN MM. PER
INTERPRET DIM AND TOL PER
ASME Y14.5M - 1994

THIRD ANGLE PROJECTION



FINISH

QJUE PRODUCTS, LLC

TITLE CLUTCH

POLY "V" 8K, 123 MM O.D.
12 VDC, 3-EYE

SIZE A CODE IDENT NO DWG NO QPCL-0155 REV

SCALE NONE SHEET 1 OF 1

CAD GENERATED DRAWING, DO NOT MANUALLY UPDATE	DATE
DRAWN	08/15/08
CHECKED	
APPROVED	
ENG APPVL	